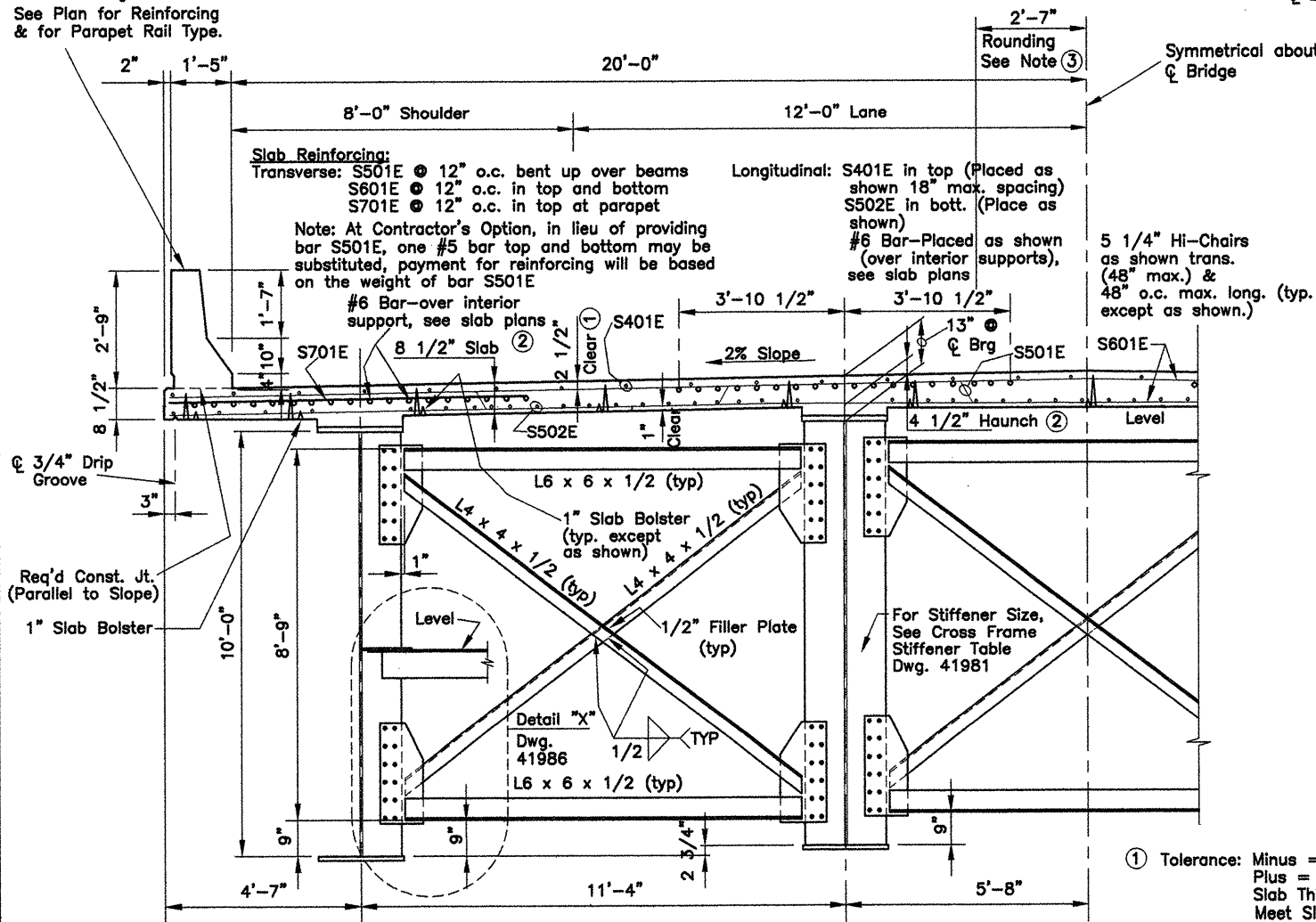


COMPANY\1999 JOBS\99-044 AHTD\WHITERIVER\JOB 110394\1050sectait1&2 ACAD SCALE: 1/2"=1'-0"

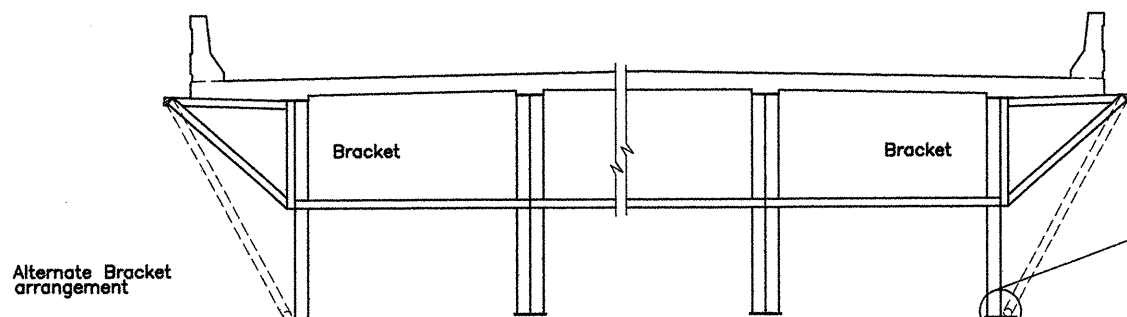
For Placing of Parapet Reinforcing See Dwg. No. 41992 & Reinforcing Plans See Plan for Reinforcing & for Parapet Rail Type.

Note: Class 1 Protective Surface Treatment shall be applied to the Roadway Surface and the Face and Top of Concrete Parapet Rail.



ROADWAY SECTION AT INTERIOR CROSSFRAME

Scale: 1/2" = 1'-0"



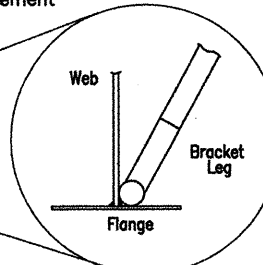
Alternate Bracket arrangement

4"x4" (Min.) Timber Bracing at each bracket location in all bays (wedge tight).

Positive support under and above bracing to prevent bracing and wedge from falling or shifting vertically.

The brackets shall be installed in a manner that avoids any nicks or gouges in the flange, web, and weld.

Alternate Bracket arrangement



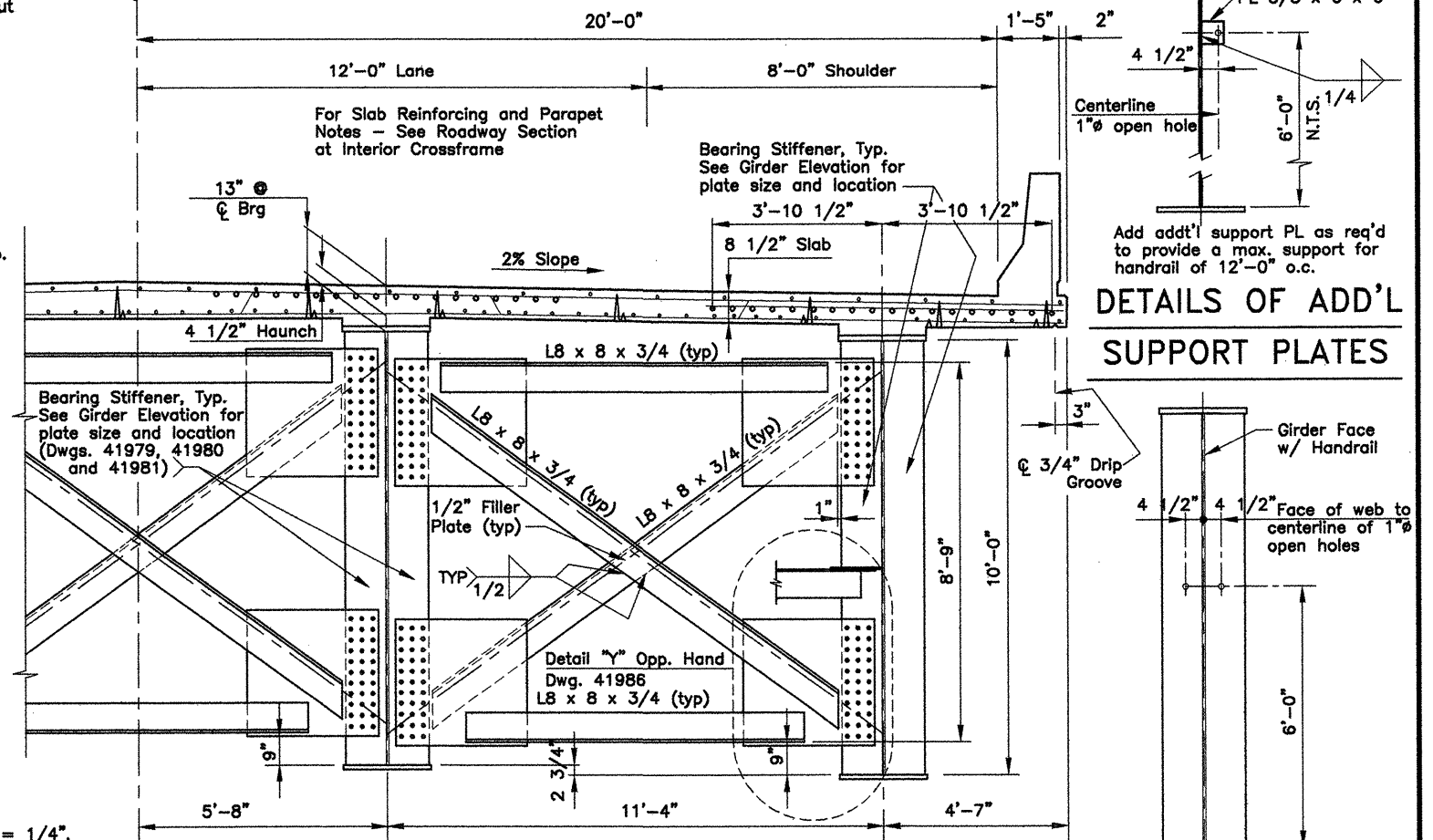
Note: If a transverse finishing machine is used, the rail shall be supported directly over the exterior girders, or as an alternate, the rail may be supported by the overhang brackets if the above strutting system is used. The strutting system may be omitted if web stiffeners are welded to the insides of the exterior girders at the location of each bracket or if the alternate bracket arrangement shown above is used. For size of stiffener, see cross frame stiffener table on Drawing No. 41981. The Alternate Bracket arrangement shall extend down to the junction of the web and bottom flange. The stiffener shall conform to the details for Cross-Frame Stiffener shown on Drawing No. 41981. No direct payment will be made for brackets, timber bracing, supports, or welded stiffeners. Payment shall be subsidiary to "Structural Steel in Plate Girder Spans (M270, Gr. 50W)".

SCREED RAIL SUPPORT

N.T.S.

Symmetrical about \bar{C} Bridge

Symmetrical about \bar{C} Bridge

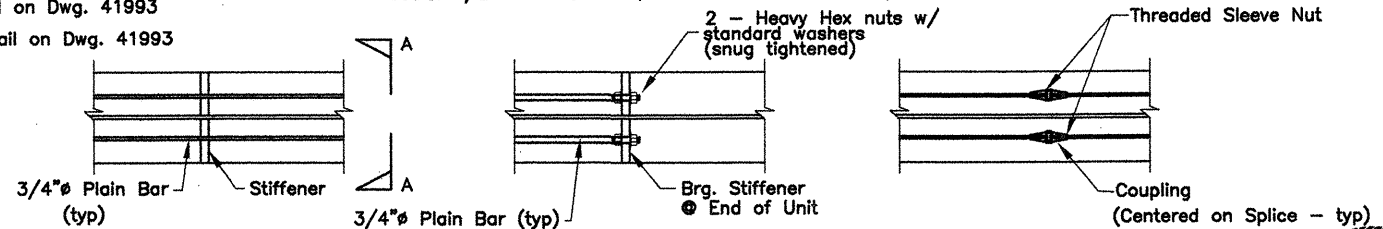


ROADWAY SECTION NEAR INTERIOR BENTS

SECTION A-A

- 2) Refer to Typ. Haunch Detail on Dwg. 41993
- 3) Refer to Typ. Rounding Detail on Dwg. 41993

Scale: 1/2" = 1'-0" (4 @ EACH INTERIOR BENT)



DETAILS OF FIELD ERECTED HANDRAILS

For details of couplings see dwg. no. 41986

Note: Handrails shall be on inside of the Exterior Girder and both sides of the Interior Girder.

Unless otherwise noted, all structural steel in safety handrails shall conform to the requirements of AASHTO M270, Gr. 36 and Section 807 of the Standard Specifications. All Structural steel shall be included in the Quantities for the 1050' unit and paid for as "Structural Steel in Plate Girder Spans (M270, Gr. 50W)".

All Structural steel in safety handrails shall be galvanized according to AASHTO M232, Class C. All galvanizing, required or optional, will not be paid for directly, but will be included in the item of "Structural Steel in Plate Girder Spans (M270, Gr. 50W)".



BRIDGE ENGINEER

ALTERNATES NO.1 & NO. 2
BRIDGE OVER WHITE RIVER
(SHEET 7 OF 15)

DETAILS OF 1050'-0" CONT. COMP.
PLATE GIRDER UNIT

WHITE RIVER STR. & APPRS.
(CLARENDON) (PH I) (F)
MONROE COUNTY

ROUTE 79 SEC. 13

ARKANSAS STATE HIGHWAY COMMISSION
LITTLE ROCK, ARK.

Engstrom/Modjeski and Masters

DRAWN BY: GE DATE: Nov. 07 FILENAME: b110394_s07
CHECKED BY: HJE DATE: Nov. 01 SCALE: 1/2"=1'-0"
DESIGNED BY: HJE DATE: Nov. 01

BRIDGE NO. 06830

DRAWING NO. 41985

DATE REVISED	DATE FILMED	DATE REVISED	DATE FILMED	FED. ROAD NO.	STATE	FED. AID PROJ. NO.	SHEET NO.	TOTAL SHEETS
					ARK.			
						JOB NO. 110394	73	196
						06830 1050' RDWY. SECTIONS 41985		